

SANTA ANA UNIFIED SCHOOL DISTRICT

LCAP Update Presentation DAC/DELAC February 28, 2022

*Emily Wolk, Ph.D., Executive Director, Research and Evaluation
Marjorie Cochran, Ed.D., Administrator Grant Writer/LCAP Lead*



Board Priority Areas



DISTRICT GRADUATE PROFILE



SANTA ANA UNIFIED SCHOOL DISTRICT

The Santa Ana Unified School District, parents, families, and community are committed to ensure that ALL graduates:

Apply their knowledge, values and ethics gained to participate and innovate in a global and culturally diverse world.

Are architects of their life and learning, experiencing autonomy while persisting in the development of their life's goals.

Demonstrate mastery in literacy, numeracy and reasoning to address complex real-world problems in an increasingly demanding 21st Century.

Have a confident spirit of inquiry and think of themselves as resilient, lifelong learners who have agency in their learning and achievement.

Demonstrate their college and career readiness through work-based-experiential-service learning and internship experiences within the local community.

Commit to become moral and ethical leaders who seek to build their life in the service of others.

Adapt and persist to overcome academic and personal barriers to maintain a state of complete physical, mental and social emotional well-being while achieving their full potential.

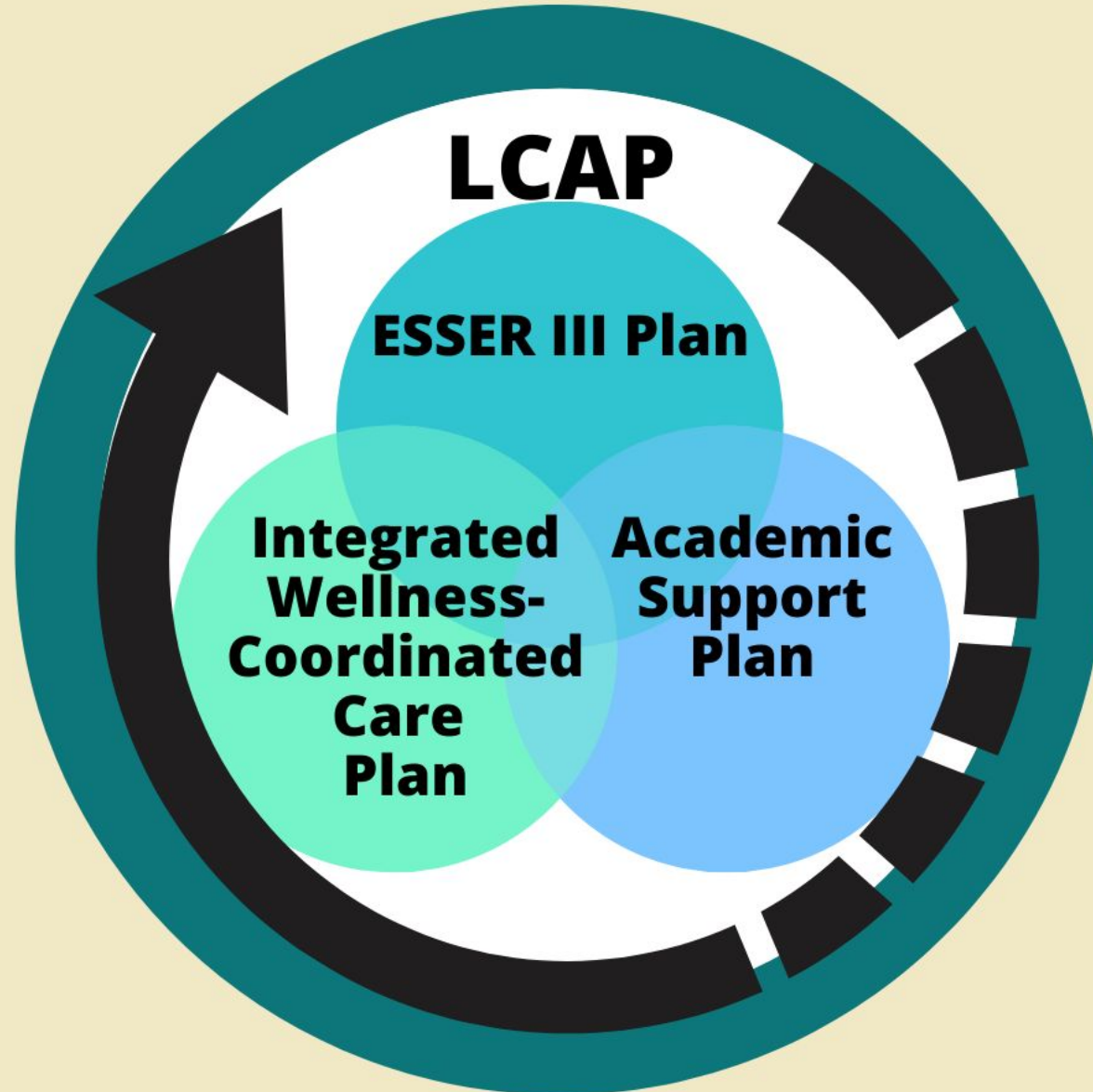
Develop skill sets in these areas: career, communication, cultural self-awareness, collaboration/teamwork, financial literacy and technology that help them compete/succeed locally and globally, now and in the future.



COVID One-Time Federal Funds

- **ESSER**
- **ARP**
- **GEER**

Board Priority Areas



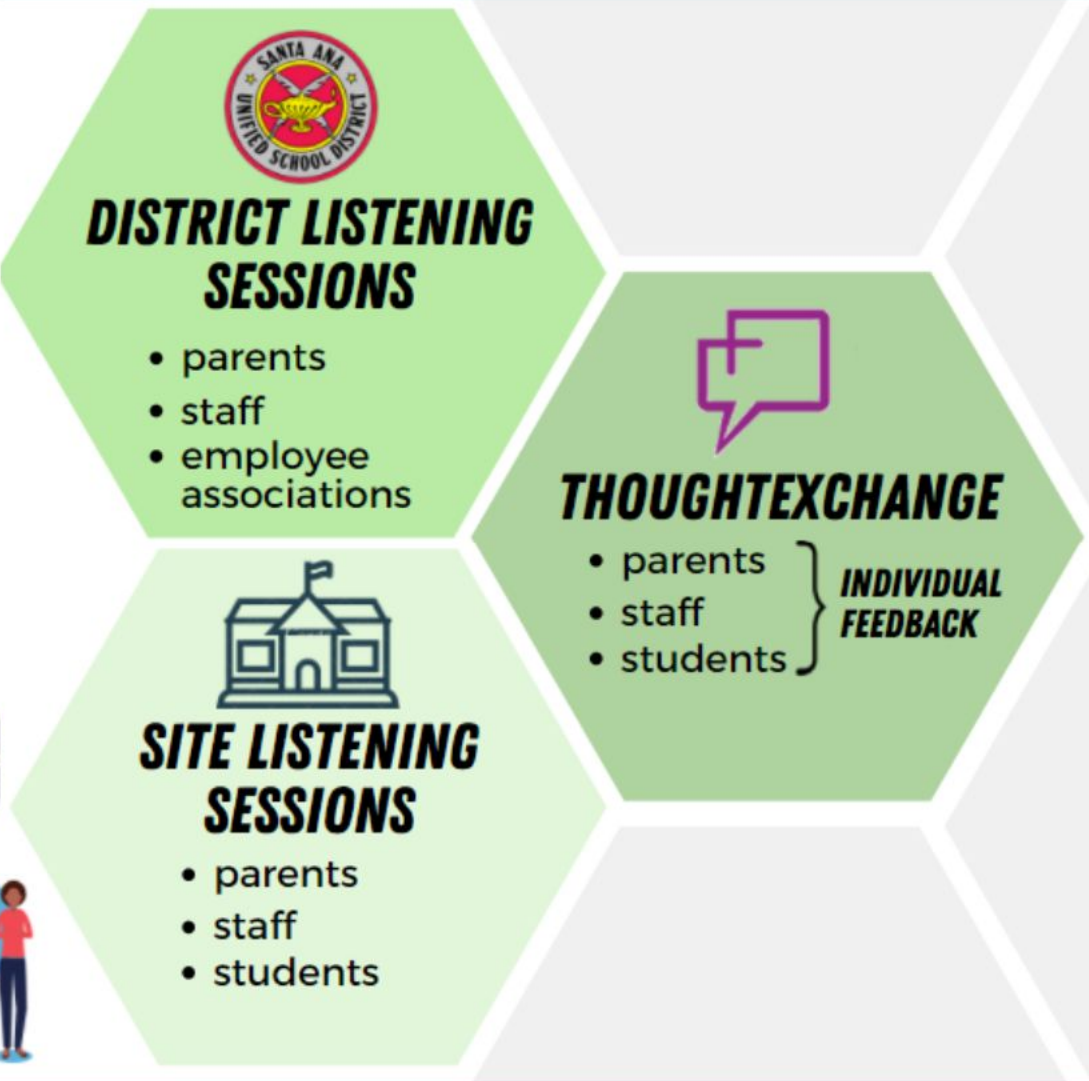
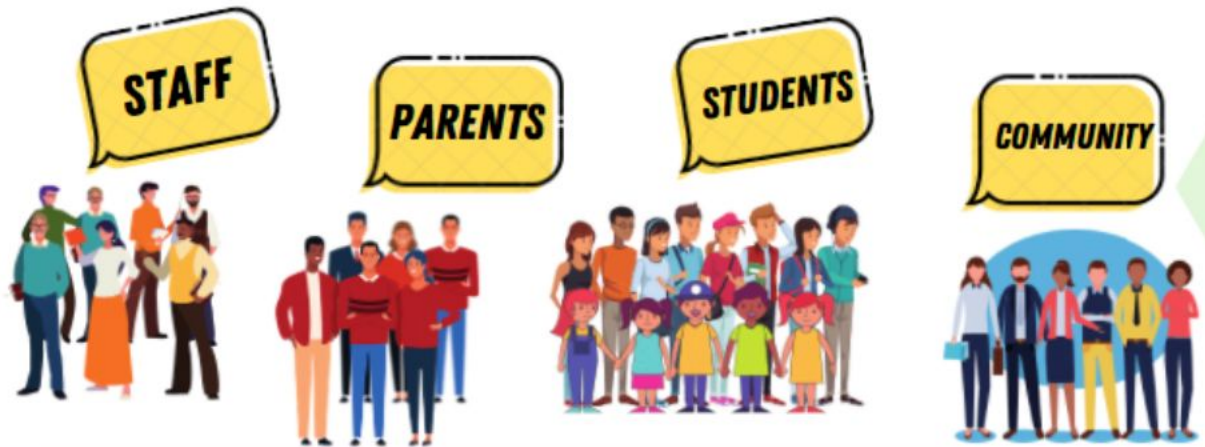
Additional Fiscal Resources

Other State Funds

- **Extended Learning Opportunity Program (ELOP)**
- **Extended Learning Opportunity Grant (ELOG)**
- **A-G Completion**
- **Universal Pre-Kindergarten (UPK)**
- **Educator Effectiveness**
- **15% additional concentration funds**

GATHERING FEEDBACK FROM EDUCATIONAL PARTNERS

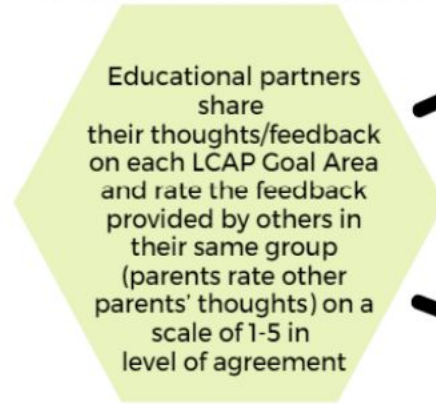
A Multi-Pronged Approach



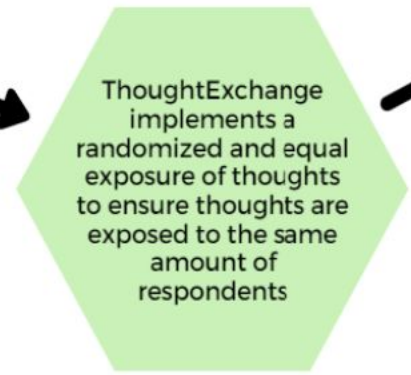
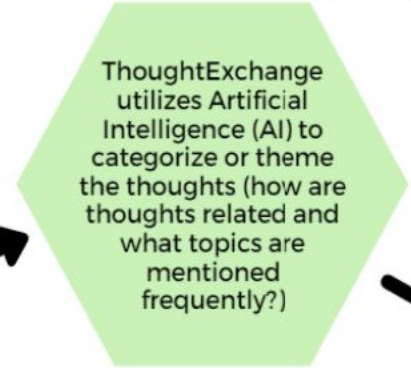
THE THOUGHT EXCHANGE PROCESS



DATA COLLECTION PROCESS



THOUGHT EXCHANGE PROCESS



ACTIONABLE DATA WE CAN INTERPRET AND USE TO INFORM LCAP AND BUDGET PROCESS



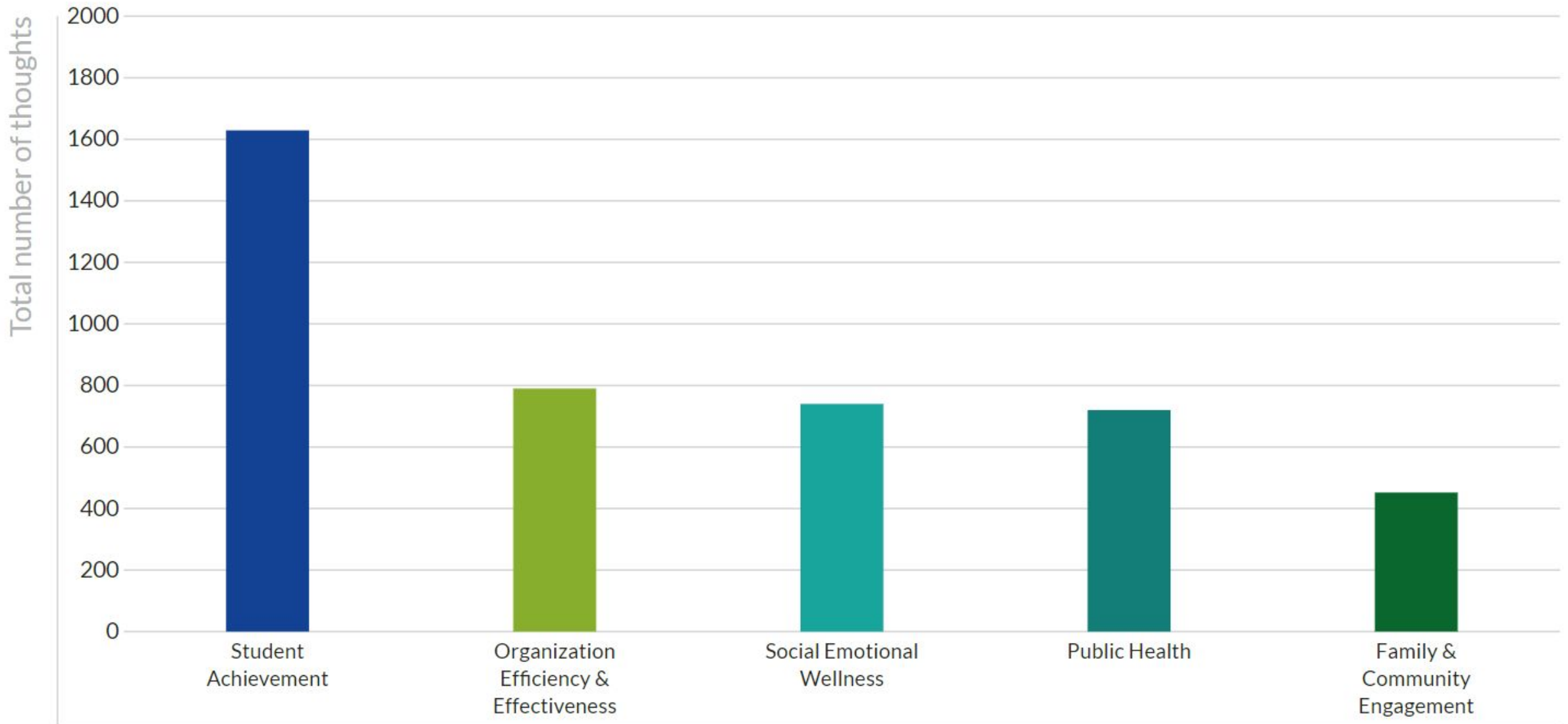
PARTICIPATION SURVEY

2021-22 LCAP ThoughtExchange Feedback			
Educational Partners	# of Participants	# of Thoughts Shared	# of Ratings
Parent/Guardian	672	1,129	8,087
Student	371	1,273	4,089
Administrator	100	202	1,586
Community Member	38	37	274
Certificated Staff	973	1,695	18,247
Classified Staff	224	757	3,510
Other	25	62	224
Total	2,403	5,155	36,017

VIRTUAL LISTENING SESSIONS:	District Listening Sessions 208 attendees	Site Listening Sessions 3,812 attendees
------------------------------------	--	--



LCAP Goals and Total Number of Thoughts





Top-Rated Thoughts in Student Achievement across Educational Partners

Parent Thought:

Offering tutoring is a great help to students. Students need to receive extra support in areas where they need help.

4.1 ★

Student Thought:

Do more fun things with the kids for the holidays. The kids won't be bored And they can share their things art and crafts with each other.

4.2 ★

Community Member Thought:

Assist students in gaining credit through concurrent and dual enrollment. Develop dual enrollment pathways at Santa Ana College. Use shuttles/buses to transport students to after-school classes at Digital Media Center.

4.1 ★

Administrator Thought:

Students are going to need lots of support academically. It's important since students have had a lot of disruptions to their learning.

4.2 ★

Certificated Employee Thought:

I think we need to have more substitute teachers available. Often administration is being pulled to cover classes when they are needed to do their administration duties.

4.5 ★

Classified Employee Thought:

I like how we have sports at the schools but would love to involve theatre or more clubs. If we had theatre or an arts program it could benefit all students as arts help students stay out of trouble.

4.3 ★



Top-Rated Thoughts in Family & Community Engagement across Educational Partners

Parent Thought:

Yes I like ParentSquare. It is good communication between teachers and parents.

4.2 ★

Student Thought:

Be more open about our community

4.2 ★

Community Member Thought:

Having more community organizations present their resources. It's important because a lot of the times families aren't able go out on their own and find these resources or they are hesitant to request assistance.

4.1 ★

Administrator Thought:

The virtual DAC/DELAC Meetings are at a time that admin can attend. Yay! Please keep them virtual. All info at DAC/DELAC should be shared with parents at each site.

4.1 ★

Certificated Employee Thought:

Parent Square emails helps parents stay connected to classroom and school activities. The more communication parents have the more the feel a part of the school community.

4.1 ★

Classified Employee Thought:

Keeping the parents informed of any events or important information Parents will know all the information

4.1 ★



Top-Rated Thoughts in Social Emotional Wellness across Educational Partners

Parent Thought:

I'm glad to see schools back to in-person learning. Students are being encourage to join after school sports and activities. Students had a very difficult year during remote learning.

4.3 ★

Student Thought:

One of the things we could do better is info about mental health, what it really is, and how to approach it. Mental health isn't just "self-care". It's about people you interact with, home environment, and lack of time for "self-care". "Self-care" is now a cliché word with no meaning to students.

4.3 ★

Community Member Thought:

I think investing in mental health is wonderful. Student's especially at an early age should be taught how to cope with their feelings and how to deal with them in a healthy way.

4.1 ★

Administrator Thought:

I think we are starting to address Students social emotional needs and that is good Supporting the whole child is critical especially now

4.4 ★

Certificated Employee Thought:

It is great having a counselor on campus. We have a lot of students dealing with big feelings (anxiety, grief, etc) so it is helpful having a professional on site to help them

4.4 ★

Classified Employee Thought:

Building community We need to build a culture of inclusion and making it comfortable for people to share their ideas

4.3 ★



Top-Rated Thoughts in Organizational Efficiency & Effectiveness across Educational Partners

Parent Thought:

Keeping the parking lot safe for when students get dropped off.

4.2 ★

Student Thought:

Counselors are available but if there was an online appointment system that would help. everything now is online and sometimes if they send a call slip to your classroom you might miss it.

4.0 ★

Community Member Thought:

Invoicing and receiving payments seems to always have issues. I have multiple contracts with the school district, multiple sites and for many years The process keeps changing and invoices are slow to get paid; Sometimes I don't receive payment till a year or so.

4.0 ★

Administrator Thought:

Improve operation procedures It takes forever to get things done, e.g. extra duty, hiring, technology setup

4.5 ★

Certificated Employee Thought:

I think we need to have more substitute teachers available. Often administration is being pulled to cover classes when they are needed to do their administration duties.

4.5 ★

Classified Employee Thought:

Pay staff on time!! Regardless of position Everyone who works any amount of time must be paid!

4.3 ★



Top-Rated Thoughts in Public Health across Educational Partners

Parent Thought:

Great job on implementing safety protocols. This is important because it helps us stay safe and in person.

4.2 ★

Student Thought:

I think the district is doing good on Covid procedures and supporting students. The cleanliness at the school is horrible. It is important that the school gets clean because it affects the students and teachers health. There are puddles of stagnant water in the bathrooms.

3.9 ★

Community Member Thought:

NA

NA ★

Administrator Thought:

The schools and district have done a great job providing public health resources to families. Many families depend on the schools for information because they know they can trust it. SAUSD has done a good job providing health resources.

4.0 ★

Certificated Employee Thought:

Covid PPE Its important for everyone's safety and ease of mind for parents sending their children to school

4.2 ★

Classified Employee Thought:

COVID Protocols have been excellent It's not easy trying to please everyone but SAUSD has done right by students, parents and staff as far as COVID safety is concerned.

4.3 ★

2021-22 LCAP MID-YEAR SUPPLEMENTAL REPORT – EXPENDITURES BY LCAP ACTION

LCAP Action	LCAP Action Title	Budget Amount
1.01	High Quality Standards-Based Core Curriculum	\$ 38,509,541.62
1.02	High Qualified Teachers	\$ 236,164,092.70
1.03	Technology Integration	\$ 22,101,064.24
1.04	Matriculation Support	\$ 1,349,279.32
1.05	Early Learning	\$ 13,779,007.15
1.06	Broad Course of Study - High School Focused	\$ 26,170,175.43
1.07	Broad Course of Study - TK-12	\$ 11,608,259.01
1.08	Tiered Academic Supports	\$ 33,917,254.22
1.09	Special Education Services	\$ 144,639,315.79
1.10	Access for English Language Learners	\$ 499,124.12
1.11	Extended Learning Opportunities and Supports	\$ 16,643,282.50
1.12	Dual Immersion Programs	\$ 71,726.42
1.13	Library Services	\$ 4,333,870.16
1.14	Effective English Language Learner Programs	\$ 5,384,053.07
	Goal 1 - Student Achievement Total	\$ 555,170,045.75

LCAP Action	LCAP Action Title	Budget Amount
2.01	Parent, Family and Community Advisory Groups	\$ 7,529.16
2.02	School-based Community Wellness Hubs	\$ 1,159,510.88
2.03	Family and Community Engagement	\$ 2,517,655.00
2.04	Respectful School Culture	\$ 1,099.11
2.05	Parent/Caregiver Involvement	\$ 2,977,756.42
2.06	Addressing Language Needs	\$ 988,488.57
2.07	Community Partnerships	\$ 2,801,022.34
2.08	Parent and Family Leadership	\$ 6,000.00
2.09	Effective Communication	\$ 2,188,931.26
	Goal 2 - Family and Community Engagement Total	\$ 12,647,992.74

2021-22 LCAP MID-YEAR SUPPLEMENTAL REPORT – EXPENDITURES BY LCAP ACTION

LCAP Action	LCAP Action Title	Budget Amount
3.01	Social Emotional Learning	\$ 2,029.00
3.02	Welcoming Safe and Inclusive School Environment	\$ 3,688.80
3.03	Wellness Network of Support	\$ 12,419,059.00
3.04	Health Services	\$ 3,504,380.43
3.05	PBIS	\$ 1,172,728.35
3.06	Connecting Students and Families to Community Resources	\$ 1,666,575.26
3.07	Targeted SEW Strategies	\$ 897,824.82
3.08	Targeted Support for Unduplicated Student Groups	\$ 663,709.61
3.09	Wrap Around and Nutrition Services	\$ 42,971,008.89
	Goal 3 -Social Emotional Wellness Total	\$ 63,301,004.16

LCAP Action	LCAP Action Title	Budget Amount
4.01	SAFETY: Adult Supervision	\$ 7,963,603.99
4.02	SAFETY: Emergency Response and Preparedness	\$ 1,347,673.53
4.03	FACILITIES: Future-Ready Learning and Working Environments	\$ 128,422,305.74
4.06	SAFETY: School Police Services	\$ 10,708,870.36
4.07	EFFICIENCY: Smooth Operations	\$ 160,893,895.77
4.11	EFFICIENCY: Charter Schools	\$ 148,356.50
4.12	PROFESSIONAL LEARNING: Goal 1	\$ 14,653,071.23
4.13	PROFESSIONAL LEARNING: Goal 2	\$ 62,915.61
4.14	PROFESSIONAL LEARNING: Goal 4	\$ 334,234.75
4.15	High Qualified Leadership	\$ 30,680,473.81
4.16	PROFESSIONAL LEARNING: Goal 3	\$ 20,089.43
	Goal 4 - Organizational Efficiency & Effectiveness Total	\$ 355,235,490.72

LCAP Action	LCAP Action Title	Budget Amount
5.02	Procedures to Minimize Exposures	\$ 2,369.52
5.03	Response to Illness Detecion	\$ 295,826.50
5.04	Implementation of Health Protocols and Routines	\$ 2,482,904.99
5.05	CDC Movement and Physical Distancing Guidelines	\$ 6,550.48
5.06	COVID Related Staff Training and Information	\$ 8,020,000.00
	Goal 5 - Public Health Total	\$ 10,807,651.49

Share your
feedback in
the chat!

THANK YOU!

